

IDBLUE R8.HF Bluetooth Pairing Guide



Contents

Change Record	3
Disclaimer.....	4
Trademarks	4
Introduction	5
Bluetooth Pairing on Microsoft Windows 7®.....	6
Bluetooth Pairing with Microsoft Windows Vista®.....	9
Troubleshooting.....	11
Contact Information.....	12

Change Record

Version	Date	Author	Comments
1.0	Feb 25, 2010	CBP	Initial Version

Disclaimer

Copyright© 2010 Cathexis Innovations Inc. All Rights Reserved.

Cathexis Innovations Inc. assumes no responsibility for any errors which may appear in this document, reserves the right to change systems or specifications detailed herein at any time without notice, and does not make any commitment to update the information contained herein. No licenses to patents or other intellectual property of Cathexis are granted by the Company in connection with the sale of Cathexis products, expressly or by implication.

All specifications are subject to change without notice.

Cathexis, IDBLUE, CathexisWEB, and Powered by Cathexis RFID Engine are either registered trademarks or trademarks of Cathexis Innovations Inc. in Canada and/or other countries.

Trademarks

IDBLUE® is a registered trademark of Cathexis Innovations Inc. (www.cathexis.com/)

Bluetooth® is a registered trademark of the Bluetooth SIG (<http://www.bluetooth.com/>).

Microsoft, Microsoft Windows XP, Microsoft Windows Vista, Microsoft Windows Server 2003, PocketPC, Windows Mobile are either registered trademarks or trademarks of Microsoft Corporation (<http://www.microsoft.com/>) in the United States and/or other countries.

IDBLUE R8.HF Bluetooth Pairing Guide

Introduction

Congratulations on purchasing your new IDBLUE R8.HF device. This guide details how to connect your IDBLUE R8.HF device with your Windows 7® or Windows Vista® computer via Bluetooth®.

For more information, please visit the IDBLUE support website:

<http://www.idblue.com/support.aspx>

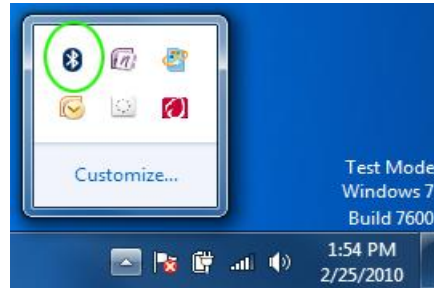


IDBLUE R8.HF Bluetooth Pairing Guide

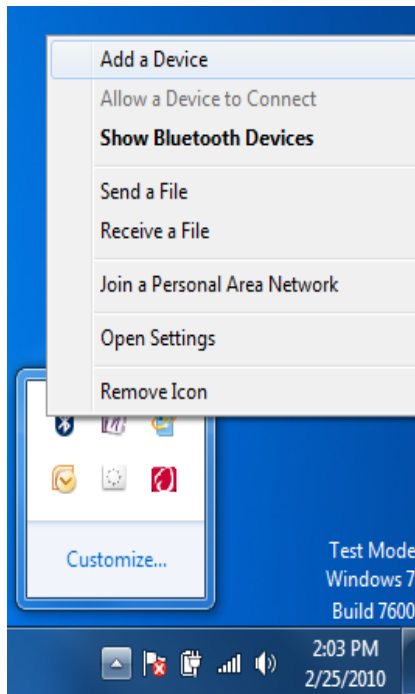
Bluetooth Pairing on Microsoft Windows 7®

Step 1: Turn on the IDBLUE device.

Step 2: Find the Bluetooth icon located in the system tray in the bottom right side of your desktop.



Step 3: Click on the Bluetooth icon and select **Add a Device** from the context menu.



Step 4: Place the IDBLUE device in discovery mode by pressing and releasing the power (rear) button. The rear LED should flash blue to indicate discovery mode.

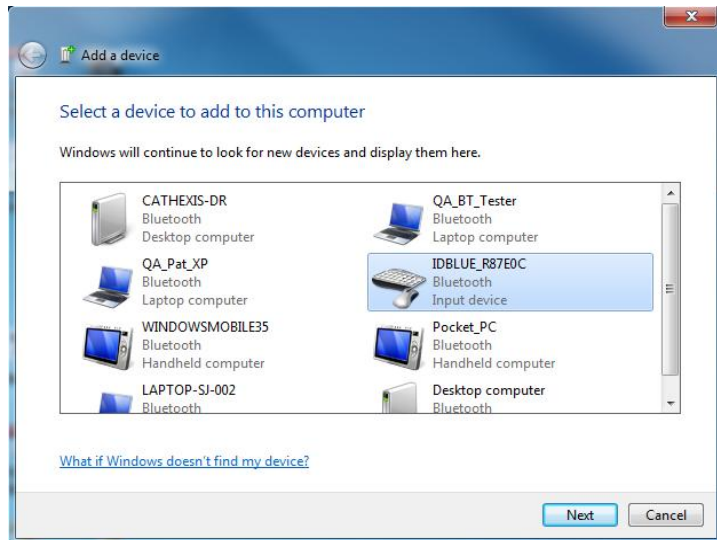


IDBLUE R8.HF Bluetooth Pairing Guide

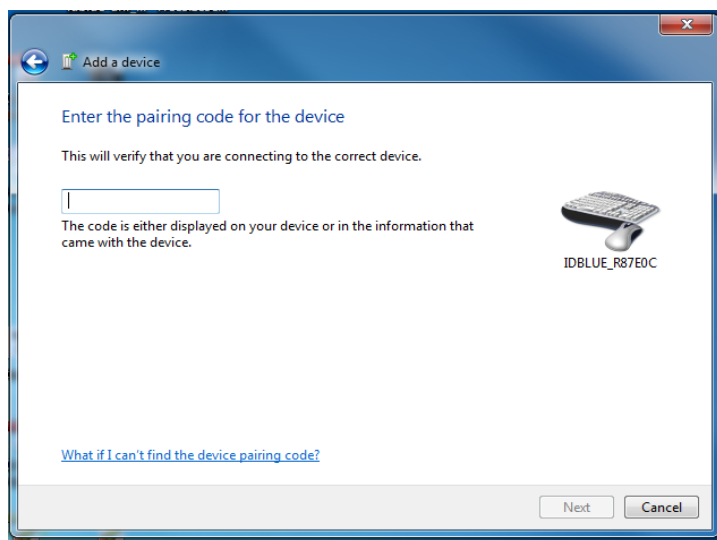
Step 5: In the Add a device window, find the IDBLUE device that you are attempting to pair with.

Note: The IDBLUE device ID can be found on the back label, and should be of the format IDBLUE_R8XXXX.

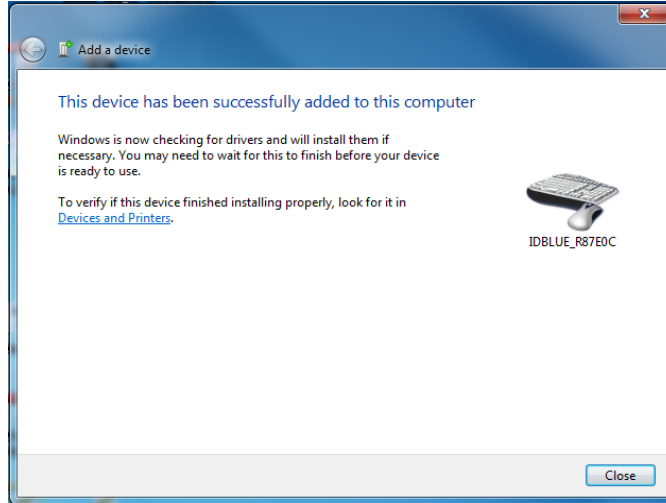
Highlight this device ID in the window and click *Next*.



Step 6: Enter the pairing code for the device. The default pairing code for IDBLUE is '0000' (Four zeros). Please enter this pin code and click *Next*.



Step 7: That's it! You are done. You can now run the IDBLUE Manager and start using your device. (*Start->All Programs->IDBLUE->IDBLUE Manager->IDBLUE Manager*).



IDBLUE R8.HF Bluetooth Pairing Guide

Bluetooth Pairing with Microsoft Windows Vista®

Step 1: Turn on the IDBLUE device.

Step 2: Click on the Bluetooth icon (located in the system tray in the bottom right side of your desktop) and select **Add a Bluetooth Device** from the context menu.

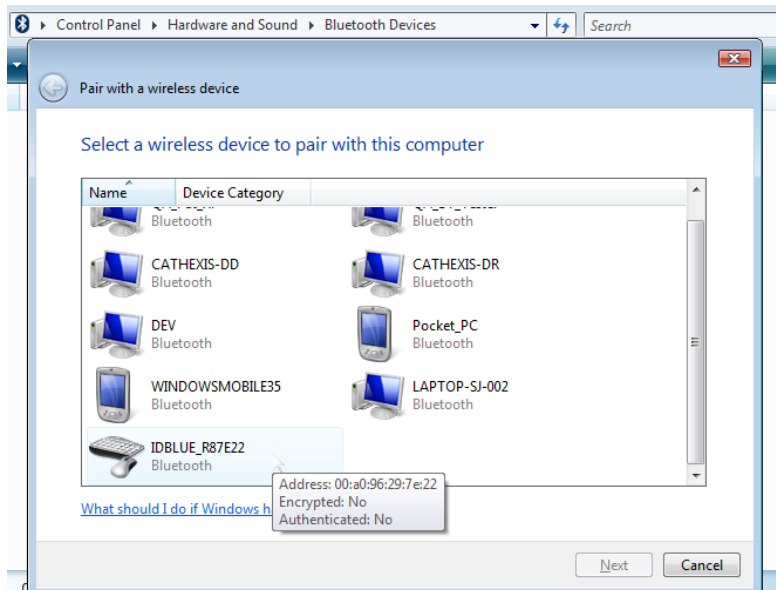


Step 3: Place the IDBLUE device in discovery mode by pressing and releasing the power (rear) button. The rear LED should flash blue to indicate discovery mode.

Step 4: In the Add a device window, find the IDBLUE device that you are attempting to pair with.

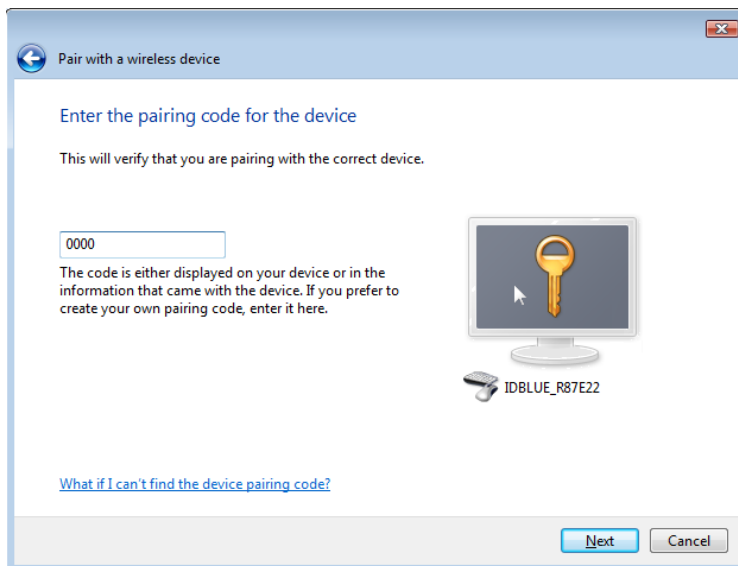
Note: The IDBLUE device ID can be found on the back label, and should be of the format IDBLUE_R8XXXX.

Highlight this device ID in the window and click *Next*.

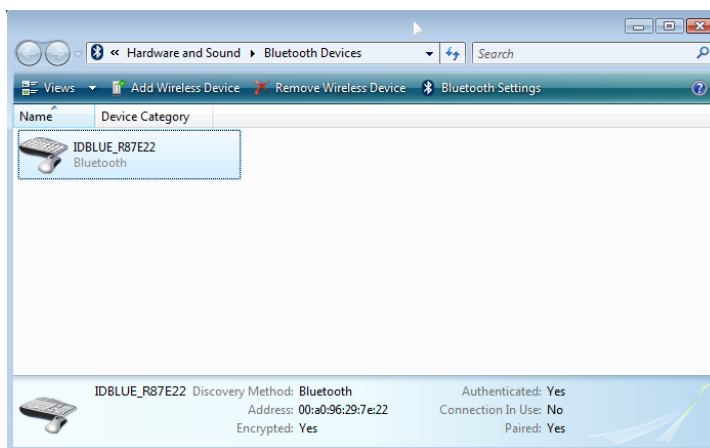


IDBLUE R8.HF Bluetooth Pairing Guide

Step 5: Enter the pairing code for the device. The default pairing code for IDBLUE is '0000' (Four zeros). Please enter this pin code and click *Next*.



Step 6: That's it! You are done. You can now run the IDBLUE Manager and start using your device. (*Start->All Programs->IDBLUE->IDBLUE Manager->IDBLUE Manager*).



IDBLUE R8.HF Bluetooth Pairing Guide

Troubleshooting

For the most up-to-date FAQ and other support information, please consult IDBLUE R8.HF support website at:

<http://www.idblue.com/support.aspx>

When contacting IDBLUE Support, please ensure that you have the following information available in order to streamline the resolution process:

- IDBLUE serial # (Bluetooth address)
- IDBLUE firmware version (Found under 'Update Firmware' in IDBLUE Manager)
- Bluetooth hardware information
 - Vendor (e.g. DLink)
 - Model number (e.g. DBT-120 B4)
 - Bluetooth stack type and version
- Device make and model for PocketPC devices and laptop / TabletPC's.
- Any error messages, or screenshots of error messages that you have encountered.



Contact Information

For more information about IDBLUE R8.HF and other IDBLUE products and services:

IDBLUE Product Page <http://www.idblue.com/products.aspx>

IDBLUE Sales
Email: sales@idblue.com
Phone: +1 (709) 754-7343
Fax: +1 (709) 754-7349

IDBLUE Support <http://www.idblue.com/support.aspx>
Phone: +1 (866) 304-7343 Ext. 322
+1 (709) 754-7343 Ext. 322

General Inquiries:
IDBLUE
P.O. Box 23131
Churchill Square
St. John's, NL
A1B 4J9



Copyright© 2010 Cathexis Innovations Inc. All Rights Reserved. Cathexis Innovations Inc. assumes no responsibility for any errors which may appear in this document, reserves the right to change systems or specifications detailed herein at any time without notice, and does not make any commitment to update the information contained herein. No licenses to patents or other intellectual property of Cathexis are granted by the Company in connection with the sale of Cathexis products, expressly or by implication. All specifications are subject to change without notice. Cathexis, IDBLUE, and Mobile.RFID.Solutions are either registered trademarks or trademarks of Cathexis Innovations Inc. in Canada and/or other countries. The Bluetooth name and Bluetooth registered trademarks are owned by Bluetooth SIG, Inc. Microsoft, Windows, and the Windows logo are trademarks or registered trademarks of Microsoft Corporation in the United States and/or other countries.