

IDBLUE R8.HF Driver Installation Guide



Contents

- Change Record 3
- Disclaimer..... 4
- Trademarks 4
- Introduction 5
- Troubleshooting..... 12
- Contact Information..... 13

Change Record

Version	Date	Author	Comments
1.1	March 17, 2010	DMB	Address change
1.0	June 18, 2009	DMB	Initial Version

Disclaimer

Copyright© 2010 Cathexis Innovations Inc. All Rights Reserved.

Cathexis Innovations Inc. assumes no responsibility for any errors which may appear in this document, reserves the right to change systems or specifications detailed herein at any time without notice, and does not make any commitment to update the information contained herein. No licenses to patents or other intellectual property of Cathexis are granted by the Company in connection with the sale of Cathexis products, expressly or by implication.

All specifications are subject to change without notice.

Cathexis, IDBLUE, CathexisWEB, and Powered by Cathexis RFID Engine are either registered trademarks or trademarks of Cathexis Innovations Inc. in Canada and/or other countries.

Trademarks

IDBLUE® is a registered trademark of Cathexis Innovations Inc. (www.cathexis.com/)

Bluetooth® is a registered trademark of the Bluetooth SIG (<http://www.bluetooth.com/>).

Microsoft, Microsoft Windows XP, Microsoft Windows Vista, Microsoft Windows Server 2003, PocketPC, Windows Mobile are either registered trademarks or trademarks of Microsoft Corporation (<http://www.microsoft.com/>) in the United States and/or other countries.

Introduction

Congratulations on purchasing your new IDBLUE R8.HF Device. Your first step should be to charge your IDBLUE R8.HF. This guide details installing the IDBLUE R8.HF Windows Driver which will allow you to charge your IDBLUE R8.HF from your Windows Vista® or Windows XP® computer with the supplied USB cable.

For more information, please visit the IDBLUE support website:

<http://www.idblue.com/support.aspx>



Microsoft Windows XP®

Step 1: Install the IDBLUE Software Suite. Assuming the default installation location, the USB driver will be located in C:\Program Files\IDBLUE\idbluehf.inf.

Step 2: Turn on the IDBLUE device.

Step 3: Plug the USB cable into the IDBLUE device and the computer.

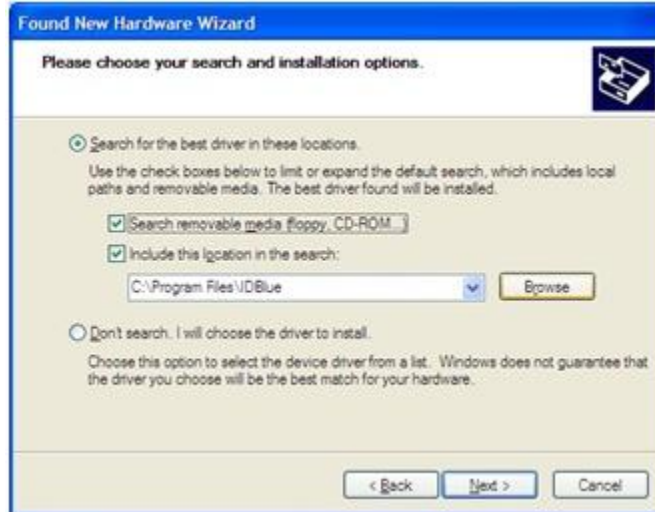
Step 4: The *Found New Hardware* wizard will appear to begin the driver installation. Select the *No, not this time* radio button and click *Next*.



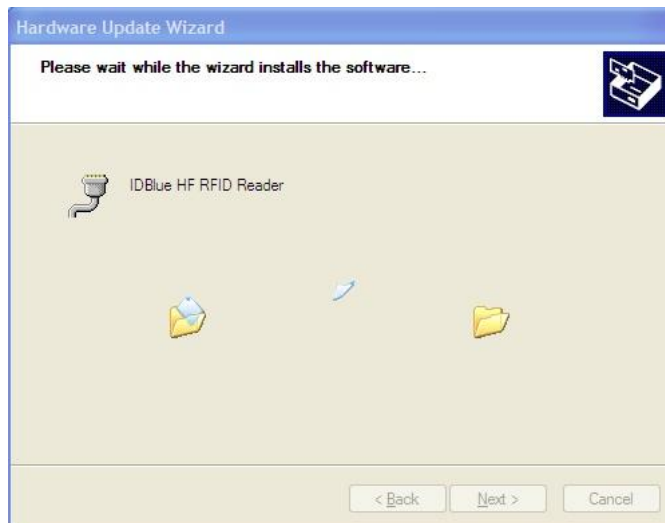
Step 5: Select *Install from a list or specific location (Advanced)* and click *Next*.



Step 6: Select *Search for the best driver in these locations*. Enter the path to the IDBLUE installation folder (defaults to C:\Program Files\IDBLUE). Click *Next*.



Step 7: The *Hardware Installation* window appears. Select *Continue Anyway to complete the installation*.





Step 8: Once the driver files are copied, click *Finish* to complete the installation.



Microsoft Windows Vista®

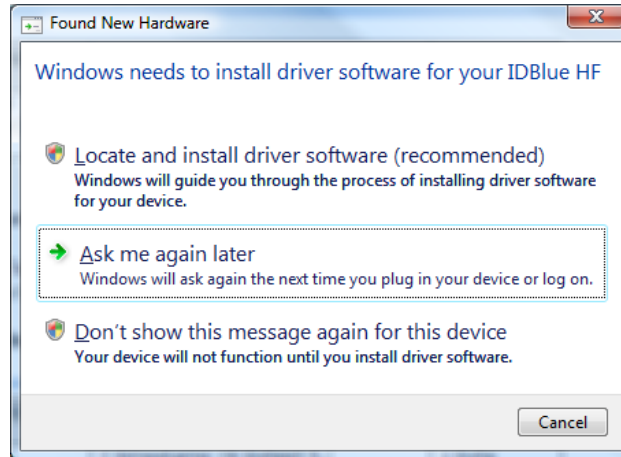
Step 1: Install the IDBLUE Software Suite. Assuming the default installation location, the USB driver will be located in C:\Program Files\IDBLUE\idbluehf.inf.

Step 2: Turn on the IDBLUE device.

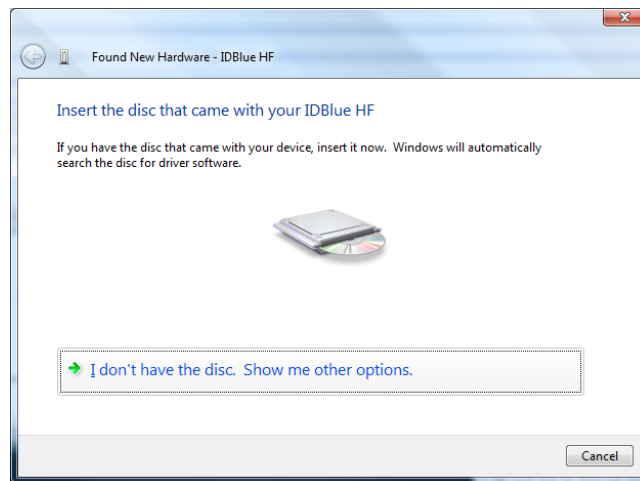
Step 3: Plug the USB cable into the IDBLUE device and the computer.



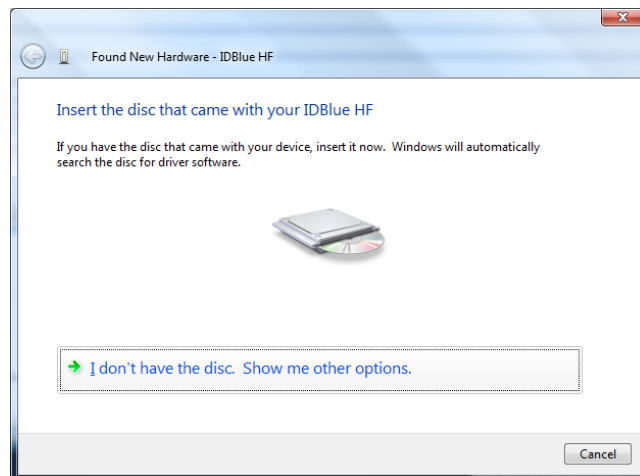
Step 4: The *Found New Hardware* wizard will appear to begin the driver installation. Click *Locate and install driver software (recommended)*. The Installing device driver software balloon appears at the task bar.



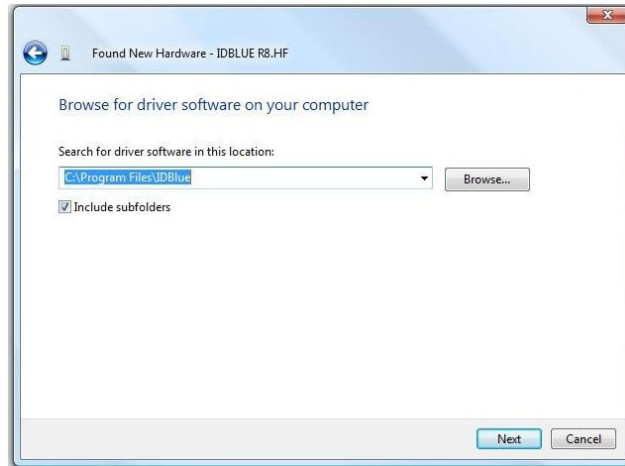
Step 5: The *Found New Hardware* window will appear. Click *I don't have the disk. Show me other options*.



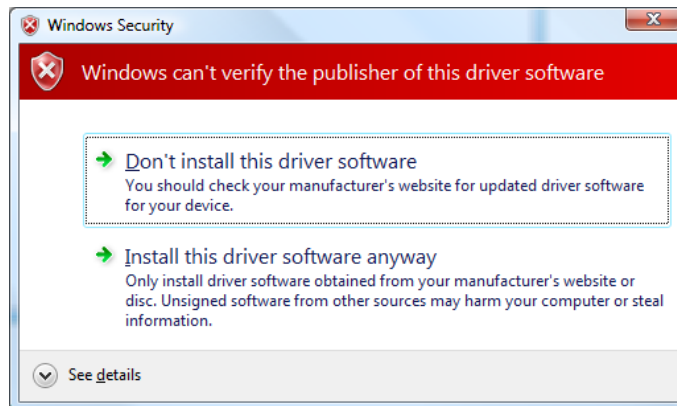
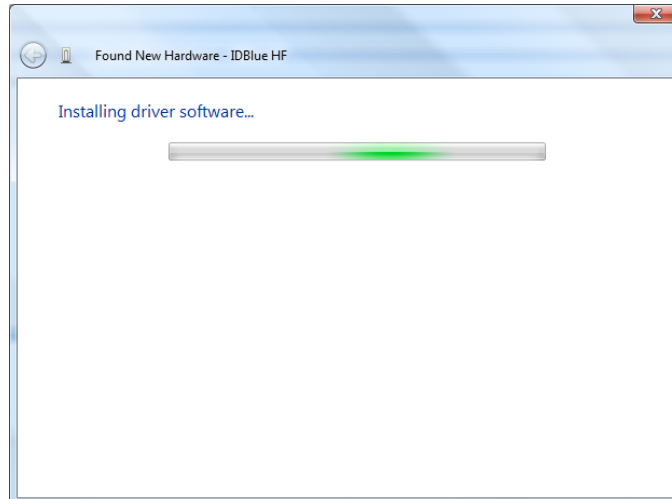
Step 6: Click *Browse my computer for driver software (advanced)*.



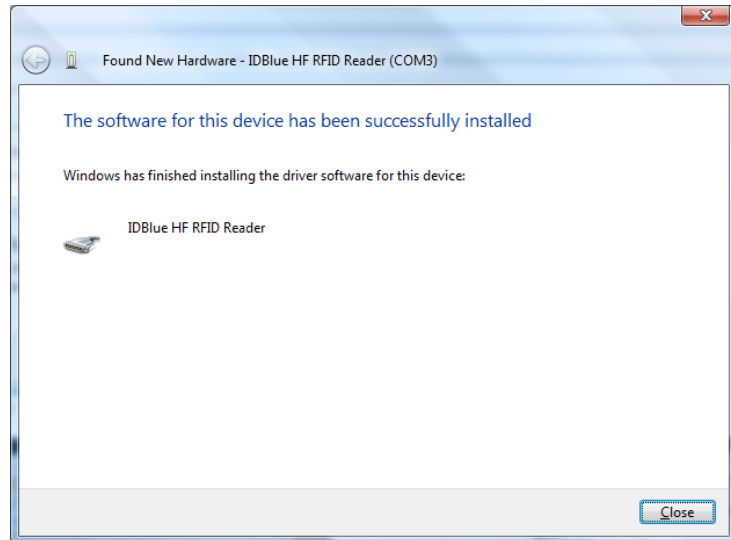
Step 7: Enter the path to the IDBLUE installation folder (defaults to C:\Program Files\IDBLUE). Click *Next*.



Step 8: The *Installing driver software...* window appears, followed by a *Windows Security* window. Select *Install this driversoftware anyway* to complete the installation.



Step 9: Once the driver files are copied, click *Close* to complete the installation.



Troubleshooting

For the most up-to-date FAQ and other support information, please consult IDBLUE R8.HF support website at:

<http://www.idblue.com/support.aspx>

When contacting IDBLUE Support, please ensure that you have the following information available in order to streamline the resolution process:

- IDBLUE serial # (Bluetooth address)
- IDBLUE firmware version (Found under 'Update Firmware' in IDBLUE Manager)
- Bluetooth hardware information
 - Vendor (e.g. DLink)
 - Model number (e.g. DBT-120 B4)
 - Bluetooth stack type and version
- Device make and model for PocketPC devices and laptop / TabletPC's.
- Any error messages, or screenshots of error messages that you have encountered.



Contact Information

For more information about IDBLUE R8.HF and other IDBLUE products and services:

IDBLUE Product Page <http://www.idblue.com/products.aspx>

IDBLUE Sales
Email: sales@idblue.com
Phone: +1 (709) 754-7343
Fax: +1 (709) 754-7349

IDBLUE Support <http://www.idblue.com/support.aspx>
Phone: +1 (866) 304-7343 Ext. 322
+1 (709) 754-7343 Ext. 322

General Inquiries: IDBLUE
100 Signal Hill Road, The Lower Tower
St. John's, NL, Canada
A1A 1B3



Copyright© 2005 - 2010 Cathexis Innovations Inc. All Rights Reserved. Cathexis Innovations Inc. assumes no responsibility for any errors which may appear in this document, reserves the right to change systems or specifications detailed herein at any time without notice, and does not make any commitment to update the information contained herein. No licenses to patents or other intellectual property of Cathexis are granted by the Company in connection with the sale of Cathexis products, expressly or by implication. All specifications are subject to change without notice. Cathexis, IDBLUE, and Mobile.RFID.Solutions are either registered trademarks or trademarks of Cathexis Innovations Inc. in Canada and/or other countries. The Bluetooth name and Bluetooth registered trademarks are owned by Bluetooth SIG, Inc. Microsoft, Windows, and the Windows logo are trademarks or registered trademarks of Microsoft Corporation in the United States and/or other countries.